

A2E

KNOW YOUR STUDENTS.

BETTER TARGETED SUPPORT & IMPROVED COMPLETION RATES THROUGH BEHAVIOURAL SCIENCE.

ESHER HOUSE
Policy Outcomes Through Science

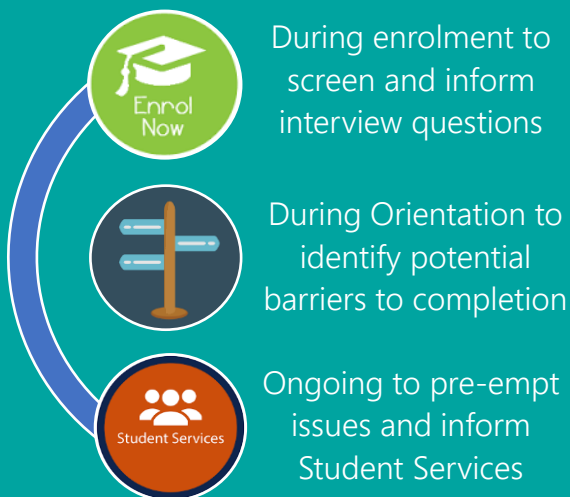


Often, by the time a student is identified as being in danger of non-completion, it is too late.

A2E uses predictive analytics, A.I. and behavioural science to act as an EARLY WARNING SYSTEM that identifies students at risk of dropping out, long before they actually do.

The 3-minute survey informs which interventions and conversations need to be had with the student to support them in the most effective manner.

It is a boon to whomever supports students at your organisation, as well as being a potential life-changer for the student.



The A2E assessment may be undertaken remotely on PCs or smartphones.

Your mentors/student support then accesses the result for each student, along with a "Coaching Guide" of *specific* interventions and conversations to have that will increase their likelihood of completion.

The system takes minutes to learn, but half-day training in student coaching techniques is also available for your mentors.

Built upon 17 years of academic, peer-reviewed research, A2E provides you with a genuine tool that provides a DUTY OF CARE to your students.

It predicts drop out before it has happened, facilitating effective resource allocation to maximise completions and revenue.

You can measure a precise return on investment.

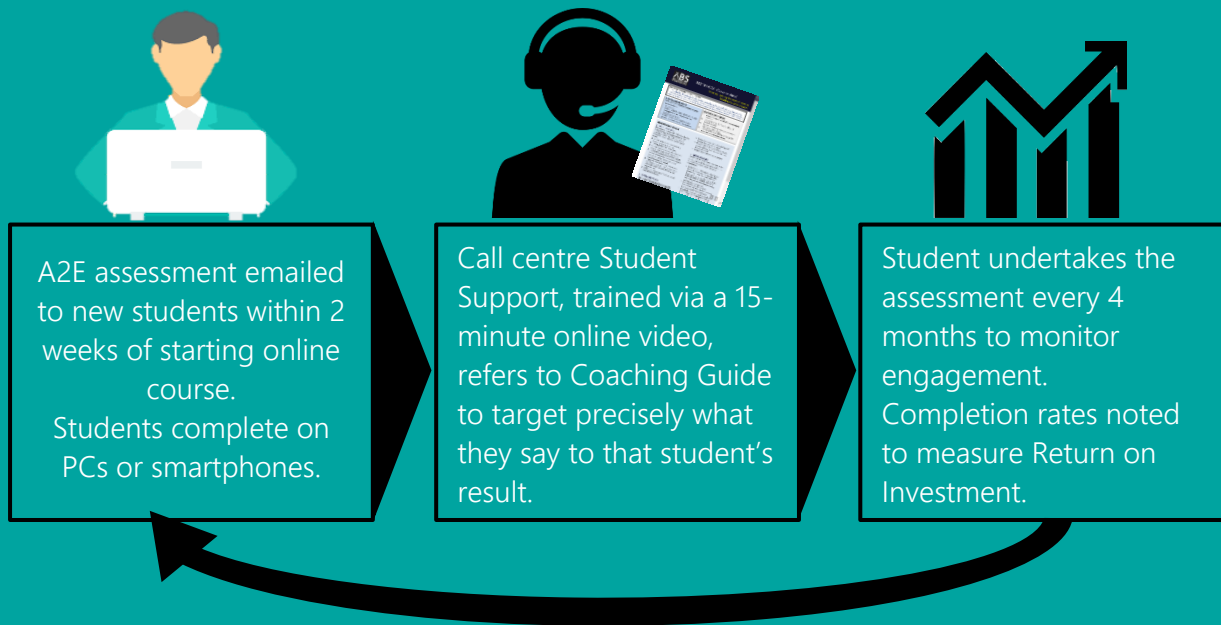
Your student support personnel themselves feel supported, upskilled and empowered.

Contact: info@esherhouse.org

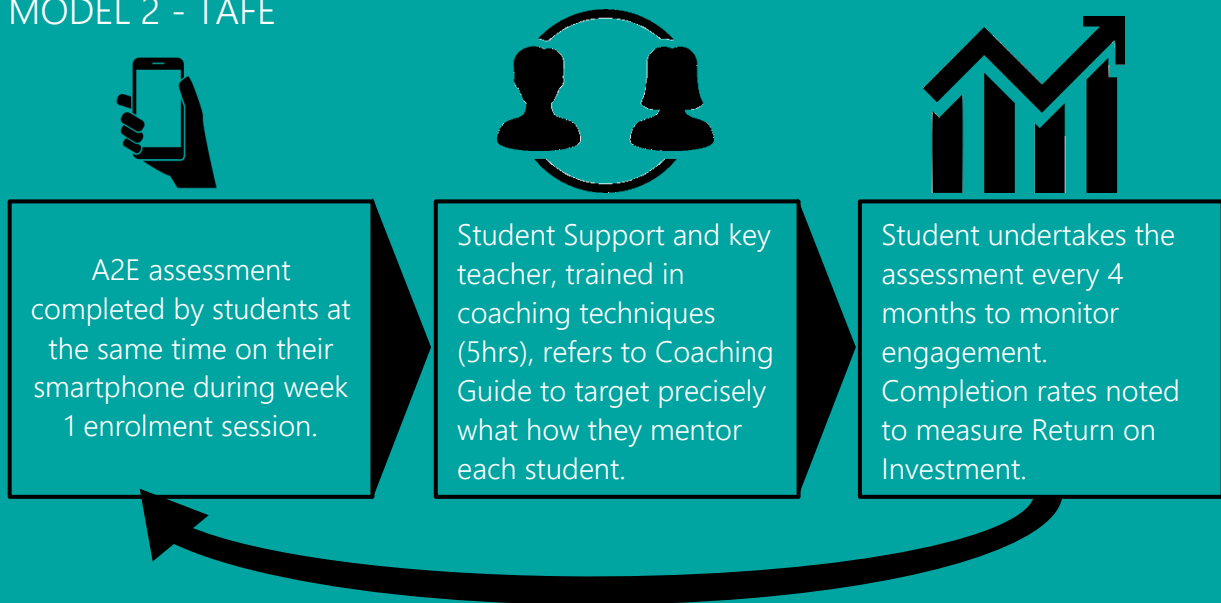
A2E+

BETTER TARGETED SUPPORT & IMPROVED COMPLETION RATES THROUGH BEHAVIOURAL SCIENCE.

MODEL 1 – ONLINE COURSE PROVIDER



MODEL 2 - TAFE



MODEL 3 - UNIVERSITY

